



Case Study

DHL, Coventry

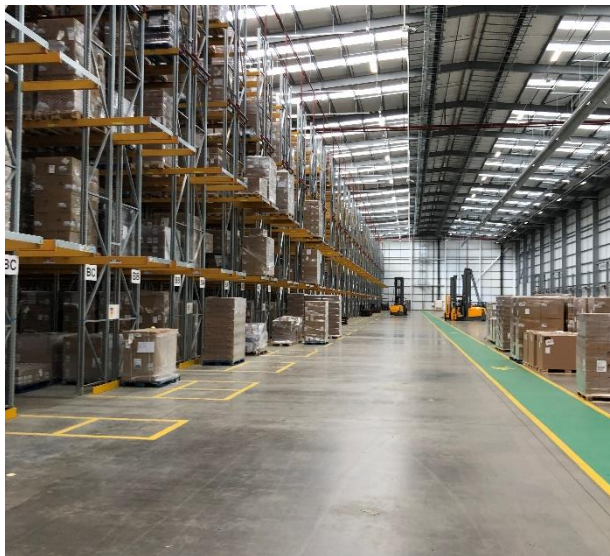
Warehouse & Office Fit Out

Contract Value: £20m

The project comprised the fit out of a 464,000 sq ft warehouse with mezzanine floor and pallet racking, together with mechanical & electrical services including lighting, sprinklers, heating, fire alarms and electrical power. Also fit out of 16,000 sq ft offices to incorporate office & welfare areas. And fit out of 4,000 sq ft hub office. external works include the construction of a gatehouse to the yard entrance, security fencing and builders work in connection with external plant.



Turnkey Works Included



- Complete Office Fit Out
- Groundwork
- Mezzanine Floor
- Goods Lift Installation
- Racking
- Sprinklers
- Warehouse Heating and Cooling
- Mechanical & Electrical Installation
- Fire Alarm and Data Installation
- External Plant Deck

T J Hall were onsite for thirty weeks in total, working on a variety of different aspects of the facility, both internally and externally. TJ Hall Electrical and Mechanical were responsible for heating, cooling, ventilation, containment, lighting, distribution, sub-mains, fire alarm, security, and data.

Creating the **perfect**
working environment

