

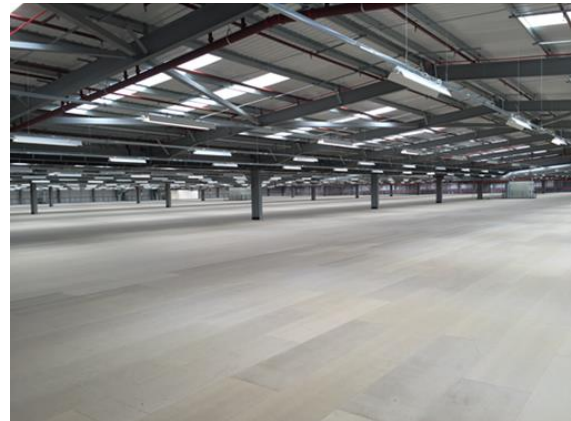


## Case Study

T K Maxx, Rugby

Warehouse & Office Fit Out

Contract Value: £6.4m



Works comprised the complete fit-out of a new warehouse. T J Hall were exceptionally proud of the Three Tier Mezzanine floor which was installed in the facility, as well as the cellular offices. The external commitments on this seven-month project included plant bases, standby generator, security fencing, and barriers.

### Turnkey Works Included



- Full Warehouse Fit Out
- Cellular Office Fit Out
- Three Tier Mezzanine
- Lighting
- Racking & Shelving
- Partitions
- Sprinkler System
- Ventilation
- Welfare Facilities
- Electrical & Mechanical Installation
- Barriers
- Bases for External Plant
- Security Fencing
- Structural Works

Creating the **perfect**  
working environment

